

# **TRAFFIC ALERT**

## **Texas Main Street Dedication Road Closures**

- . Main St. (Loop 4) between San Antonio St. and RM 967 (Live Oak St.)**
- . Ash St. between Austin St. and Main St.**
- . Elm St. between Austin St. and Main St.**

**\*Main St. South of RM 967 will Remain Open\***

### **Closure Time and Date**

**8:00 a.m. — Noon**

**Tuesday, April 18, 2017**

**See Road Closure/Detour Map Below**

**Detour Directions on Page 3**

To FM 1626

To IH 35

RR 967

GARISON

LOOP

MAIN

SAN ANTONIO

ELM

ASH

Library

CHERRY

CEDAR

LIVE OAK

RAILROAD

PEACH

ROSE

City Hall

BLUFF

AUSTIN

PRAIRIE

HOUSTON

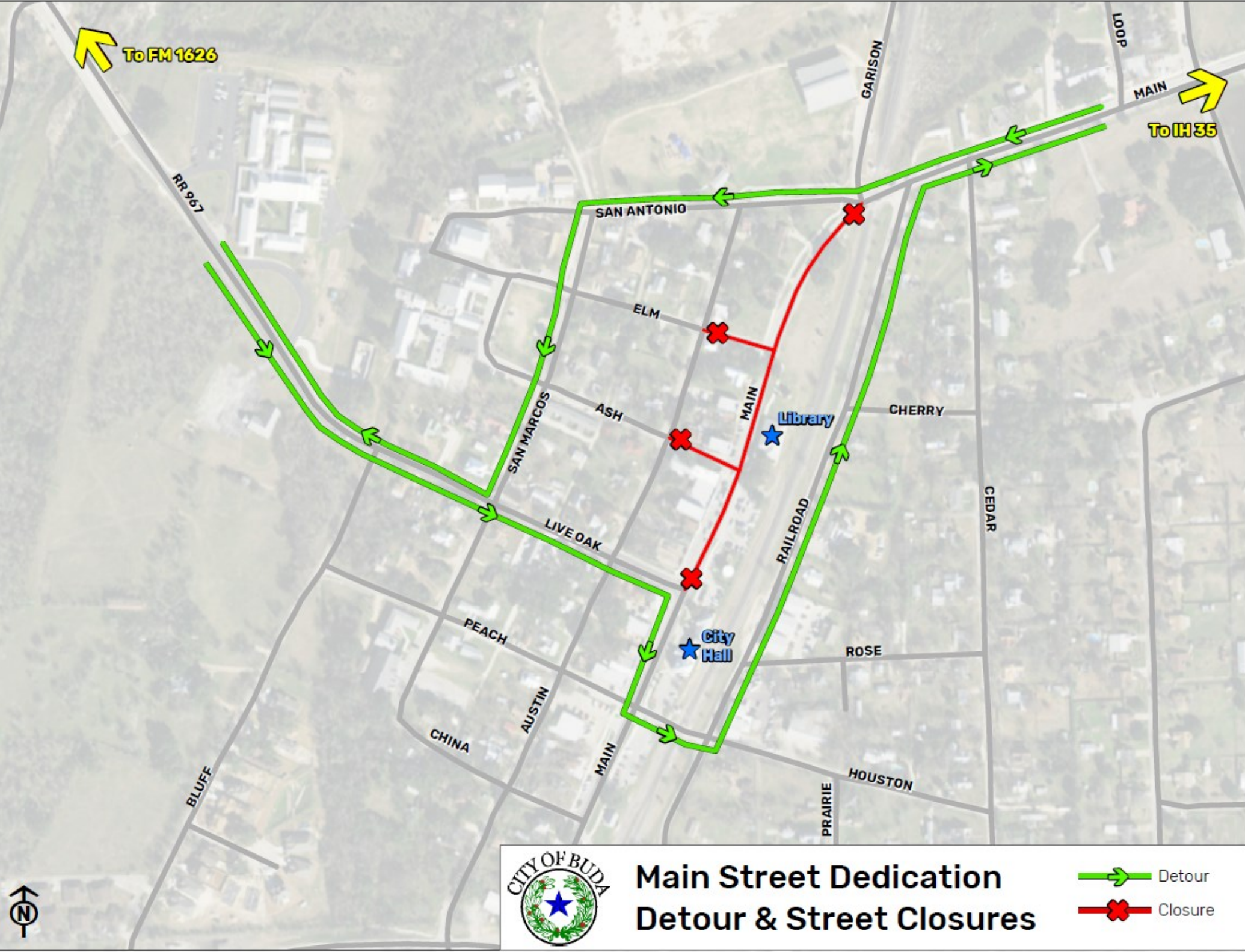
CHINA

MAIN



# Main Street Dedication Detour & Street Closures

- Detour
- Closure



# **DETOUR DIRECTIONS**

**\*Main St. South of RM 967 Will Remain Open\***

**Detour (East on Main from I-35): Take Main St. (Loop 4) and detour right to San Antonio St. Turn left on San Marcos Street to RM 967 (Live Oak St.) Take a left on RM 967 if you're trying to get back to Main. RM 967 will hit Main. Take a right on RM 967 if you're trying to get to FM 1626. RM 967 will hit FM 1626.**

**Detour (West) to Main Street: Take Main Street and then detour right to Houston Street. Go over the railroad tracks and then turn left on Railroad St. Take Railroad St. to Main St. and then turn right on Main St. towards I-35.**